

TREE RELOCATION PROCEDURAL SPECIFICATION

Tree, Palm, Shrub and other Plant Transplanting/Relocating Detail – Recommended Notes:

The American National Standard for Tree Care Operations – Tree, Shrub, and Other Woody Plant Maintenance – Standard Practices (Transplanting) ANSI A300(Part 6)–2005 must be adhered to in its entirety for all relocating/transplanting of trees and shrubs. ANSI A300 (Part 6)–2005 includes the following:

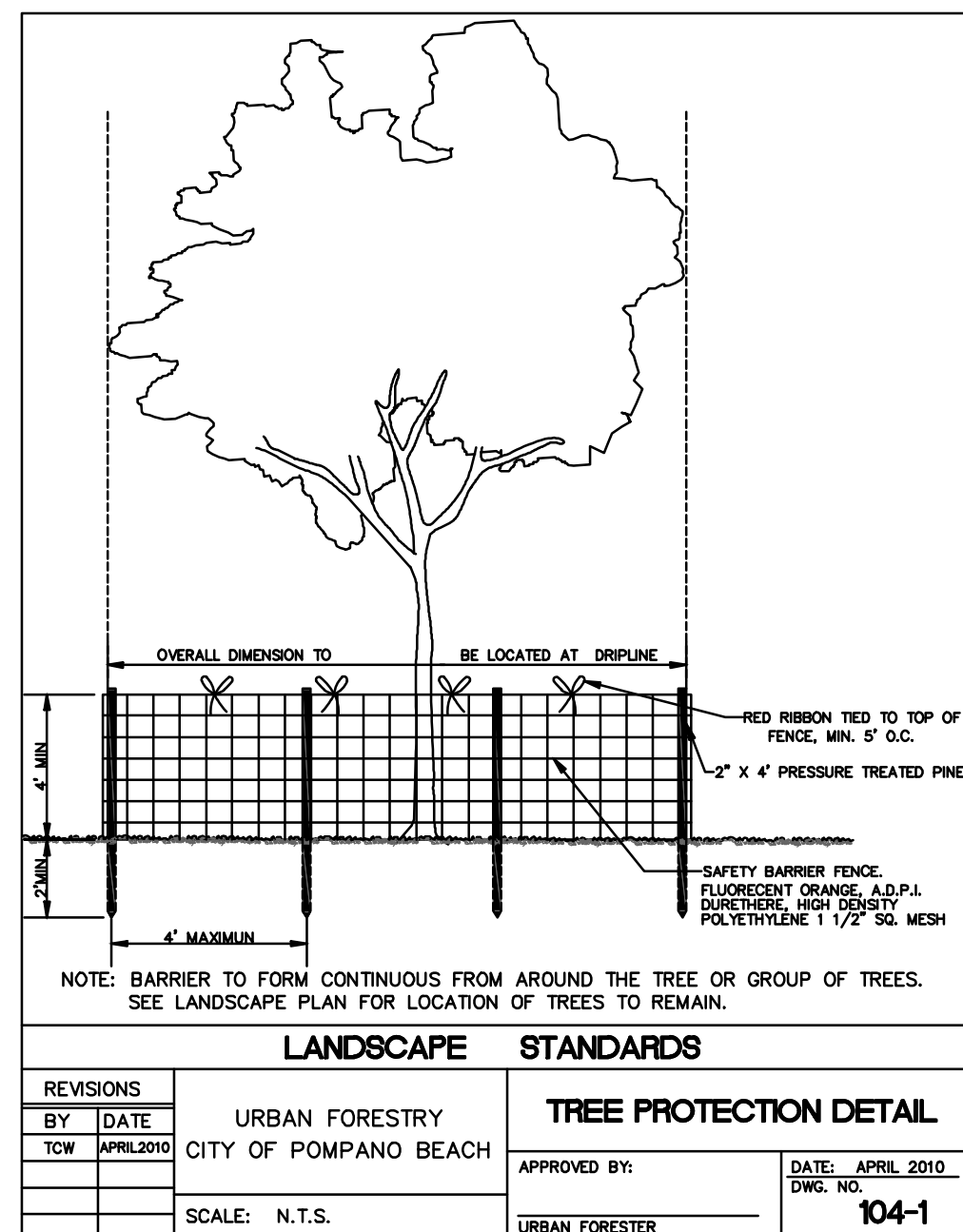
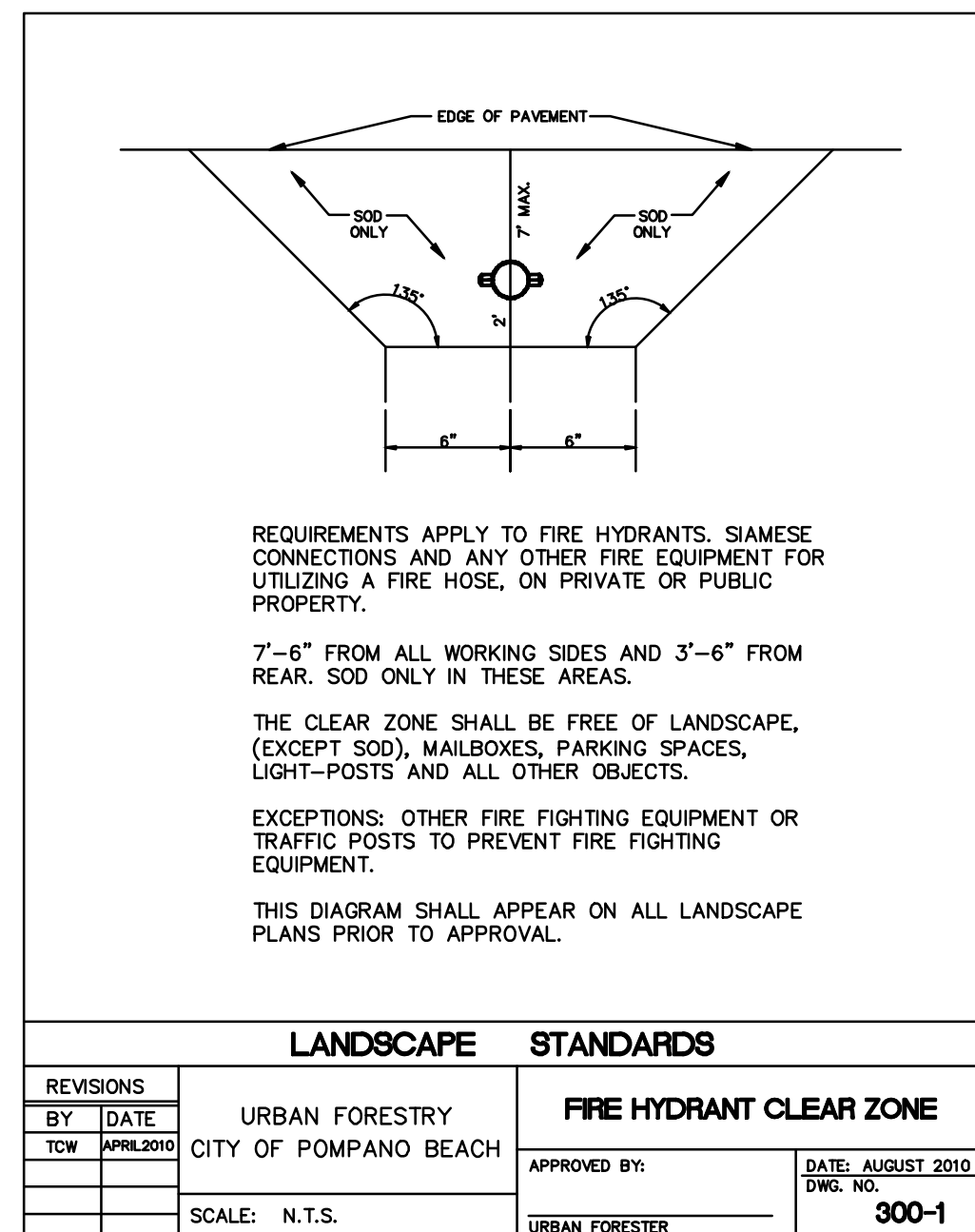
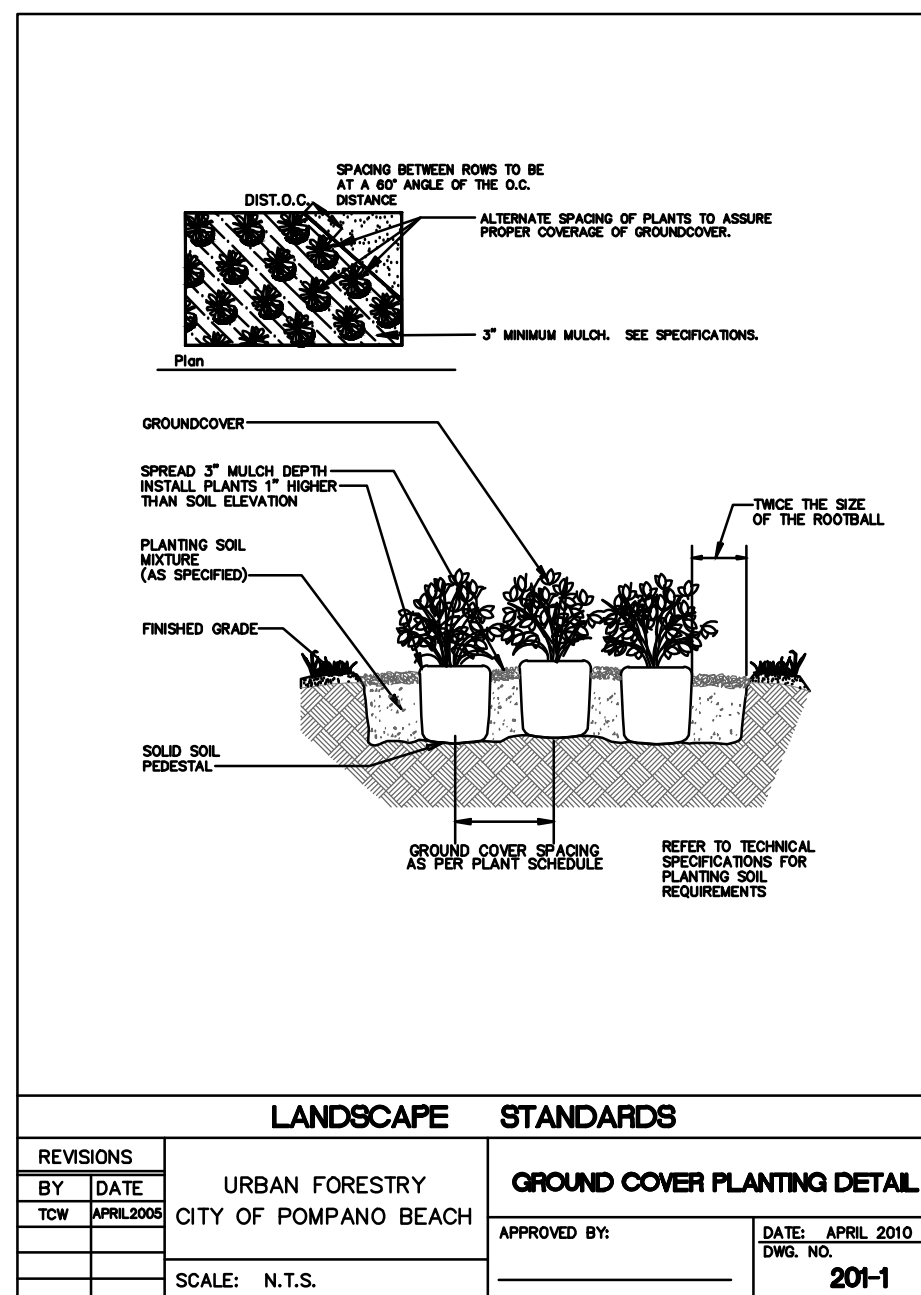
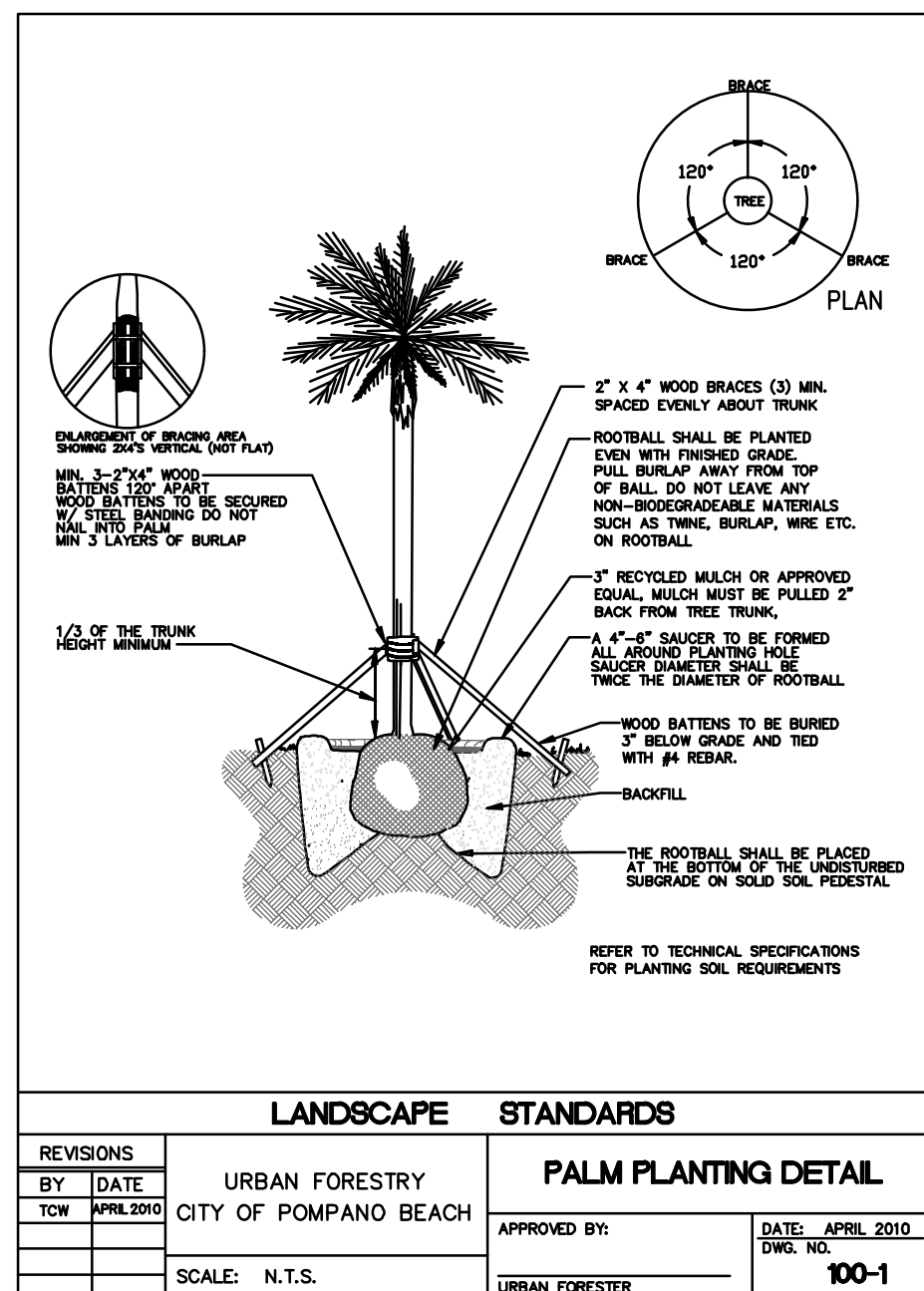
- 60 – Transplanting Standards
- 61 – Normative References
- 62 – Definitions
- 63 – Transplanting Practices

The transplanting objectives shall be established prior to beginning the operation. These objectives may be presented in a report format for permitting purposes.

A feasibility and suitability assessment shall be conducted prior to recommending transplanting. Specifications for transplanting should be based on the assessment. See the Checklist in Annex A of ANSI A300 (Part 6)–2005. This assessment may be presented in a report format for permitting purposes.

SPECIAL INSTRUCTIONS:

1. GENERAL SITE AND BERM GRADING TO +/- 1 INCH (1") SHALL BE PROVIDED BY THE GENERAL CONTRACTOR. ALL FINISHED SITE GRADING AND FINAL DECORATIVE BERM SHAPING SHALL BE PROVIDED BY THE LANDSCAPE CONTRACTOR.
2. ALL SOD AREAS AS INDICATED ON THE PLANTING PLAN SHALL RECEIVE STENOTAPHRUM SECUNDATUM, ST. AUGUSTINE 'PALMETTO' SOLID SOD. IT SHALL BE THE RESPONSIBILITY OF THE LANDSCAPE CONTRACTOR TO INCLUDE IN THE BID, THE REPAIR OF ANY SOD WHICH MAY BE DAMAGED FROM THE LANDSCAPE INSTALLATION OPERATIONS.



All plant material shall be installed with fertilizer, which shall be State approved as a complete fertilizer containing the required minimum of trace elements in addition to N-P-K, of which 50% of the nitrogen shall be derived from an organic source as per CSI specifications.

Contractors are responsible for coordinating with the owners and appropriate public agencies to assist in locating and verifying all underground utilities prior to excavation.

All ideas, designs and plans indicated or represented by this drawing are owned by and are the exclusive property of AAL.

The plan takes precedence over the plant list.

NOTES:

1. PER SECTION 155.5203.B.5 - IRRIGATION PLAN USING A RUST-FREE, AUTOMATIC UNDERGROUND IRRIGATION SYSTEM INSTALLED IN ACCORDANCE WITH THE REQUIREMENTS OF THE BUILDING CODE. IT SHALL INCLUDE A RAIN-SENSING CUTOFF DEVICE, PROVIDING 100% COVERAGE WITH 50% OVERLAP, AND REUSE WATER WHEREVER PRACTICABLE AND AVAILABLE AND BUBBLERS WILL BE PROVIDED FOR ALL NEW AND RELOCATED TREES AND PALMS.
2. SEE SHEETS L-200 THROUGH L-206 FOR THE PLANTING PLANS AND SEE SHEET L-205 FOR PLANT LIST AND LANDSCAPE CALCULATIONS.
3. ALL TREES AND PALMS PLANTED ADJACENT TO CURBING SHALL BE PLANTED 3' BACK OF SAID CURB.
4. ALL SHADE AND MEDIUM TREES INSTALLED WITHIN 5' OF A PUBLIC INFRASTRUCTURE SHALL UTILIZE A ROOT BARRIER SYSTEM. ALSO NO TREES OR SHRUBBERY SHALL BE PLACED WITHIN 3' RADIUS OF CITY OWNED SEWER LATERAL CLEANOUT OR WATER AND/OR REUSE WATER.
5. ALL HEDGES ABUTTING CITY RIGHTS-OF-WAYS SHALL BE MAINTAINED AT A HEIGHT NO GREATER THAN 24" IN ACCORDANCE WITH CODE SECTION 155.5203.B.1
6. NO DEVELOPMENT WORK OR DEMO. ACTIVITY SHALL BE ALLOWED WITHIN DRIPLINE OF AN EXISTING TREE OR TREE PROTECTION AREA. IF VIOLATION OCCURS A FINE AND OR PENALTY MAY BE INCURRED.
7. ALL TREE WORK WILL BE PERFORMED BY A BROWARD COUNTY REGISTERED TREE TRIMMER AT THE TIME OF PERMITTING IN ACCORDANCE WITH SECTION 155.2411.C.3
8. A TREE PERMIT APPLICATION FOR ALL PROPOSED TREE WORK WILL BE REQUIRED AT THE TIME OF PERMITTING IN ACCORDANCE WITH SECTION 155.211.B.
9. ALL TREES TO BE LARGE CANOPY TREES UNLESS UTILITIES OR OVERHEAD WIRES DICTATE OTHERWISE.
10. ALL GROUND MOUNTED MECHANICAL EQUIPMENT IS TO BE SCREENED FROM VIEW USING APPROVED HEDGE, FENCE, OR WALL.
11. TREE/PALM STAKING AND GUYS SHALL BE REMOVED APPROXIMATELY NINE (9) MONTHS AFTER PLANTING OR AS DIRECTED BY LANDSCAPE ARCHITECT.
12. A PRE-CONSTRUCTION MEETING WITH URBAN FORESTRY IS REQUIRED BEFORE ANY PLANT MATERIAL IS INSTALLED ON SITE
13. ALL ROAD ROCK, CONCRETE DEBRIS, ASPHALT AND OTHER NON-NATURAL MATERIAL BE REMOVED FROM ALL PLANTING AREAS PRIOR TO LANDSCAPE INSTALLATION AND REPLACED WITH PLANTING SOIL.
14. AS PER CITY ORDINANCE(S) 50.02(a)(4) AND 100.3(e), LANDSCAPING MATERIALS OTHER THAN SOD ARE NOT ALLOWED WITHIN FIVE FEET OF ANY CITY OWNED UTILITY WITHIN THE PUBLIC STREET RIGHT-OF-WAY INCLUDING METERS, HYDRANTS, SERVICE LINES ETC. PLEASE NOTE THAT NO TREES, SHRUBBERY, OR OBSTRUCTION SHALL BE PLACED WITHIN A 3' RADIUS OF A CITY-OWNED SEWER LATERAL CLEAN-OUT OR WATER AND/OR REUSE METER.
15. PLANT SPACING SHALL SUPERSEDE PLANT QUANTITY TO FILL THE LANDSCAPE BED.
16. ALL TREE WORK WILL REQUIRE PERMITTING BY A REGISTERED BROWARD COUNTY TREE TRIMMER.
17. SOD AND ARTIFICIAL TURF AREAS ARE NOT GREATER THAN 15% OF LANDSCAPE.

TYPICAL ALUMINUM PICKET FENCE DETAIL
NOT TO SCALE

FIRE HYDRANT CLEAR ZONE DETAIL